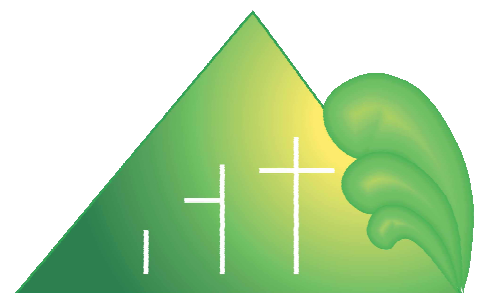


# PRISON CARE MINISTRIES

ANNUAL REPORT  
2018-2019

" I hope  
one day  
they will  
forgive  
me.  
My  
offending  
has hurt  
so  
many. "







## **Contents:**

<b>The Trustees</b> Chairpersons Annual Report Introducing trustees Acknowledgements	<b>Page 4</b>
<b>Meet the Staff</b> The Managers Annual Report Staff reports	<b>Page 7</b>
<b>Articles</b> Acknowledgements Volunteers Forgiveness Prison Care Ministries	<b>Page 14</b>
<b>Statistics</b>	<b>Page 18</b>
<b>Audited accounts</b>	<b>Page 21</b>

## Prison Care Ministries - Chairpersons Report

April 2018 - September 2019

PCM recently celebrated 15 years of service on 1-Sept-2019 at a special service at Chapel Hill Community Church. It was a hugely satisfying and encouraging event and well attended by local MPs, staff, volunteers, friends, donors and supporters of PCM. Several speakers (including a resident) spoke from different perspectives about the positive impact Geoff & Jill, Sev and the whole team have and continue to make in the lives of well over 550 (1-Apr-2019) men, who journey with PCM.



We also officially marked the occasion of Geoff & Jill finishing their roles as PCM staff and presented them with some tokens of appreciation. It also brings the transition process officially to a close. Geoff & Jill have spent most of their lives caring for and loving others (who many would shy away from) and while they're no longer PCM staff, it's difficult to see how they will suddenly stop doing what they do. So I'm confident they'll still be involved, one way or another as friends, supporters and volunteers. Jill is still a trustee and Geoff's looking forward to hanging out in his shed, working with many of the men on different projects over good coffee.

A core value of PCM is to "walk alongside" the men and this guides our thinking as we adapt to the challenges we face. We've had some new staff and volunteers join us and be a part of this vision, which is exciting to see. I hope this time next year, to be able to report more on these possibilities as they take shape.

PCM has also become a Professional Counselling Service Provider. Its early days, but it's an encouraging and very helpful capability to now be able to offer in-house.

With the law changes relating to rental housing insulation, a few of our landlords chose to sell or redevelop their land into higher density housing. This has meant we've had to find new accommodation and do a lot of shifting of men and furniture. We're grateful for understanding real-estate agents and landlords who have facilitated new houses for us.

Finally, I'd like to thank our donors and supporters who have journeyed with us for many years and look forward to PCM continuing to do what we do best.

Respectfully submitted



Alex Shepherd



### **Trustees - left to right**

**Robbie Ahu:** Self employed business owner. Married with 5 tamariki and 4 moko. They attend Gateway church. Qualified as a high performance coach in Rugby League. Robbie loves quality family times, fishing, diving and in summer motorbike riding. Previously approved volunteer to Waikeria prison.

**Maraenui Taituha:** Staff at Fairfield College. Maraenui is married to Alison and they have three children. They attend St. Marks Church. Maraenui was previously an approved volunteer to Waikeria Prison.

**Bruce McDowell:** Bruce is married to Jenny, and they have 4 adult children. They are members of Hillcrest Chapel fellowship. Bruce is self employed as a Civil Engineer, managing his own business, McDowall Structures. Bruce is also a volunteer with PCM standing alongside some of the men.

**Alex Shepherd:** Trust chairperson and Software Architect, NetValue Ltd. Alex and Judi have 3 children (one married) and attend Chapel Hill Community Church. Alex has been an Elder (served five-year term) and is part of the Church Missions Team. Alex was previously an approved visitor to Waikeria Prison.

**Jill McMillan:** Part time Staff and co founder (as is Geoff) of Prison Care Ministries. Jill and Geoff have 4 children, 12 grandchildren and 3 great grandchildren. They attend Chapel Hill Community Church. Both are approved visitors to North Island and Christchurch Prisons.

**Pam Neilson:** Pam is a retired Nurse/Midwife/Counselor. Widowed with 3 daughters, grandchildren and great grandchildren. Pam is a Host to Israeli Travelers) and attends New Life Church. Pam also does the house inspections every two months.

Thank you  
Thank you

**To the funders and supporters who ensure that  
Prison Care Ministries continue to provide support  
to those involved in the Criminal Justice System.**

Spark	Residential Phone
Trust Waikato	Wages
HCC Community Well-Being	Mileage
WEL Energy Trust	Wages
COGS	Office/Volunteers
NZ Lottery Board	Wages
Interspeed	Internet Domain
Fusion Print	Printing
NZ Bible Society	Bibles
Rhema Broadcasting Group	Word for Today
Maori Postal Aotearoa	Calendars/Magazines
Plastic Welders	Support
Te Rapa Mowers & Chainsaws	Support
Placemakers	Support



We appreciate the support from:

- Community Probation Service
- Work and Income
- Prison Staff & Chaplaincy
- Auditor

Other Trusts, Churches and Individuals who have generously made donations towards office rent, wages, general funds, house provisions and other needs as they arise.

and a big thanks to:

- our private Landlords ( 2 ) as they need to negotiate with their Insurance companies to enable their houses to be used to accommodate those who have a criminal record
- 2 Real Estate Agencies that we that we have tenancy agreements with
- our residents who really encourage us to keep going.

## **Sev Simwinga Manager**



### **When People Care People Change'**

There is nothing more gratifying than to see one man find their feet, following a term of imprisonment and successfully blend back into the community. Reflecting on what Prison Care Ministries has been doing in the past year makes me appreciate and celebrate the many successes we scored. Welcoming resident number 555 by the close of the year under review makes it all worthwhile.

### **Some Changes**

There have been some noteworthy changes in the past year include Coral Wisse concluding her tour of duty with Prison Care Ministries after 4 years of dedicated service. While Coral ceased being part of staff Prison Care Ministries on 10<sup>th</sup> December 2018 Coral, her husband Eric and their children remain faithful supporters Prison Care Ministries for which we are grateful.

On Monday 11<sup>th</sup> February 2019 a new member of the staff, Wendy Grant was welcomed on board. Wendy has come to us with a wealth of varied transferable skills, in a wide range of areas including excellent people skills. Wendy's husband, David, who is a builder, clearly has a heart of service. David has already been helping Prison Care Ministries by undertaking some urgent repairs and offering professional advice.

In November 2018 one of our landlords sold a two bedroom flat we rented from them. This reduced our bed availability from 21 beds to 19 beds.

### **Not 'A Walk in a Park'**

When released from prison men generally are full of dreams and ambitions which they desire to apply themselves to achieving. However, keeping the men focused on the possibility of a bright, productive and offence free life is no walk in a park. The revolving door of the justice system keeps on turning. Communities the world over have for centuries been trying to devise ways of reducing recidivism yet only partial successes have been scored so far. While governments the world over have, and continue to invest colossal amounts of funds into the attempts to correct and or manage the transgressors of the law, victory still remains elusive. Helping men find their feet after serving a term or in many cases, numerous terms of imprisonment is an area which has for the longest time been screaming for a decent level of

attention. Is it by sheer serendipity that Prison Care Ministries finds itself in this arena? **'Not even'**, it is an intentional effort driven by conviction.

The proof, as they say, is in the pudding and here it is; in the last year we have had 53 residents. 65 prisoners are currently on the wait list for accommodation. We estimate that 45 men will be released to our services in the next 12 months. These men benefit from the wrap around support services Prison Care Ministries provide.

### **'Putting a smile on one face is worth it'**

After sending countless Christmas cards to over 140 prisoners, the response from one of them - a 56 year old man, reads in part

***'I received your card on 8<sup>th</sup> December 2018...this is only the second time in my life that I got a Christmas Card... the first one was from "myself" and the second one from the team so thank you...'***

Another letter received recently read,

***'I would like to express my gratitude and thanks for the help and support you have given me over the past two years. This has made a positive difference in my life'.***







## John Brennan

In the past year I have continued developing the organization's systems, though on a smaller scale.

One project was an upgrade to the Rent sheets. Managing the guys rent payments has its challenges. The way PCM handles our clients rent and grocery money is unique and that means that the way Work and Income processes the guy's benefit redirections can vary from office to office and client to client. The day that we receive our first payment of rent from W&I can vary by more than two weeks. Then once the men start working and paying their rent directly to us, the rent can suddenly stop coming or even not get started at all. So it has been very helpful to have a new integrated Excel worksheet that highlights these irregularities automatically.

For released prisoners, a mobile phone is not a luxury, but a necessity. When signing into the Work & Income website, the phone is used to confirm their identity. As an application for a benefit has to be done online, and given that the sooner it is completed the sooner W&I will begin benefit payments, acquiring a phone becomes an urgent priority. Most guys have very little money and so opt for the cheap phones on offer. It has often been my job to help them get their phones up and running and sometimes it has taken hours. Some phone companies make the setup and activation process quite complicated such that the cheaper phones seem incapable of completing the task as directed. Then, to use the phone for more than talk and text requires an E-mail address so that apps can be downloaded and for some setting up an E-mail address is another unfamiliar task.

A new role for me in the past year has been preparing funding applications under the guidance of Jill McMillan. These applications often have many detailed requirements so they can involve quite a lot of work. It is critical that they are completed correctly and submitted in good time.

Of the 55 residents in our care last year, 26 either started work or continued in work

In Work	
---------	--

### Resident Outcomes for the last five years

84%

Recalled &  
Reoffended

Successful

Own Accommodation,  
Family & Friends,  
Other

## **Catherine Simwinga**

It's been a busy start to the year for me with visits to Waikeria and Tongariro Rangipo prisons already completed.

A new development is that I have retired from nursing and picked up a counseling job in Cambridge while continuing my work with PCM as well as doing some private counseling.

We are investigating the possibility of Work and Income NZ and hopefully also Midland Health to fund the counseling that is provided by PCM. This would not kick in until the second part of the year. That is still a way off but it is a working target.

We are also offering pre-release counseling to some of the men who visit PCM on what is called a guided release. The men are released for part of the day from prison for the primary purpose of attending counseling. The focus of the counseling is, with their pre-release anxiety also known as 'gate fever'. This opportunity is an exciting prospect for expansion.

As we continue to expand our counseling services, we still covet your prayers and support. It is still a new area for us at PCM and comes with its own teething problems.



Coral bid us farewell – she rendered her resignation last year in November 2018 and on the 10th of December 2018 she finished with Prison Care Ministries after 4 years of faithful service.

It still feels strange every Monday when Coral's desk is empty. The gap Coral has left has become more visible now that we have again started receiving our first lot of new releases.

Thankfully, we have another God send in the name of Wendy Grant who has filled the role.

Wendy has started on Monday 11th February 2019.

March newsletter

## **Coral Wisse**

### **Employed 10th December 2018**



**Coral with gift from staff**

## **Wendy Grant**

This has been a new role for me from the beginning of February 2019.

Monday is a busy day in the office with men coming and going for various reasons and bringing in their receipts in order to collect money for their groceries.

In general there are phone calls to answer, cleaning to be done, and office supplies to be purchased. There's always mail to respond to from men asking for potential support upon release, data to be entered and forms to be sent.

Relationships are paramount and there is always time to connect about how the week has been and what is then to come. I look forward to the coming year and being part of this community.



## Geoff and Jill McMillan

### Looking back:

Looking back through our last 14 years of annual reports, (which you can access on our web site), there have been some changes, challengers, joys and jubilations, as well as hiccups and heartaches. Every one of our men has a story to tell, many are too heart wrenching or personal for us to share. We have seen many, many lives change direction, and heard many times, “.. *without your support I would have gone back to prison ...*”!



**“On the 30th September we will be finishing as staff, but will carry on as volunteers, spending time with our residents.”**

After transitioning from Prison Fellowship NZ and establishing PCM we carried on, for a year, with Te Whare Tupu Tahi, a “Home Church” which met in Fairfield Community Center. This was for those who had been in prison and families of those in prison. This saw one released prisoner marry one wife, (became ex) of a serving prisoner.

We continued with Camp Breakaway for a further 2 years, for children of prisoners and their care-givers. In 2006 we had 8 families/caregivers with 31 children, which also included two dads who had been imprisoned themselves.

These projects came to an end as life got too busy as the number of support houses and residents All houses were offered to us by sympathetic landlords.

Meeting the prison van from Waikeria Men were dropped off at the bus depot where the public could see and know who they were! We would often take these men to the office for a coffee and to phone their family, this also kept them away from the nearby Supermarket where they would otherwise go, (for a six-pack or two)! We would try to make contact through our [extensive] list of local Christians/Churches to offer support to these men as they returned home. Sadly this also came to an end about 2016.

Up to 2010 we received payment of personal donations only, and over the years finances greater than monthly expenses were deposited into a staff trust account to build up to enable PCM to employ further staff

In 2011 we went on a salary for 32 hours per week each. PCM employed two more staff (20 hours per week each) one raising 100% of

his wages. We also had an office volunteer, (later became staff), for 6 hours. It remains PCM's view that staff raise personal support and we would like to encourage you to support our current staff.

Quotes from our first chairperson Mike Marama-Te Ahuru in the 2004 - 2005 annual report", *"with every challenge comes an achievement"*, and from Geoff, *"people don't care how much you know until they know how much you care"*.

In the 2004 – 05 year PCM received income of \$32,135.00, had 88 referrals and 28 residents with 1 returning to prison. This financial year, (2018 – 19), our income was \$332,487.00, we had 117 referrals 58 residents and 7 returned to prison. **There will always be the difficulty of not enough residents in the houses, creating the problem of meeting expenses. And the opposite, too many people creating interpersonal problems among the residents.**

Sev became a part of our team in September 2015. In November 2016 the Trustees made a transition plan to be discussed at each monthly meeting. In November 2017 Sev became manager. Over the past 3 years we have completed the plan and we are both currently employed for 18 hours a week.

Our "model" which we wrote in 2010 is still valid today. We still believe that the success of PCM is determined by the ability we have to spend time with our men and establish positive, respectful and trusting relationships with them.

### **Looking forward:**

On the 1st September Prison Care Ministries will be celebrating its 15<sup>th</sup> birthday. In 2004 when we founded PCM, we were told that, *"Support accommodation falls over in 1 year."* We now have 7 houses operating and are likely to open more.

From April 2019 we begin casual employment. On the 30th September we will be finishing as staff, and will carry on as volunteers, (as retirement is not in our vocabulary) spending time with our residents.



**From the prisoner in 2001 asking a simple question, to the search team of Hamilton Support Accommodation Network, to the founding Trustees of Prison Care Ministries, staff, volunteers and financial supporters. We wish to thank all of you for being a part of Prison Care Ministries and our lives over the years. 2001- 2019 Where did these 18 years go!!**

Hey Miss... "Where can I go when I get out of here."

Waikeria prisoner

**June 2001**

**First meeting post release  
accommodation**

David Stone  
Anton Roest  
Geoff McMillan

**July 2001**

**inaugural meeting**

17 people attended this meeting including a  
Probation officer and released prisoners.

**Nov 2001**

**Hamilton Support  
Accommodation Network (HSAN)  
Committee**

Geoff & Jill Smith  
Eileen Bosher  
Mel Impey  
Anton Roest  
Geoff & Jill McMillan

**HSAN-PCM**

**July 26th 2004** First House opened  
under HSAN. Thanks John.

**September 1st 2004** Prison Care  
Ministries became a Charitable Trust

**April 1st 2005** became a trading  
name under Prison Care Ministries

**January 2008** HSAN committee  
disbanded

**September 2004  
PCM trustees**

Mike Marama Te Ahuru (Chairperson)  
Alex Shepherd  
Len Caley  
Maraenui Taituha  
Geoff McMillan  
Jill McMillan

**Chairpersons 2004-2019**

Mike Marama Te Ahuru  
Alex Shepherd  
LenCaley  
Alex Shepherd (current)

**Past Staff** (relievers/part time/casual)

Andrew Dickson  
Kevin Stephens  
Sio & Kathleen Sauni  
Ross Anderson  
Geoff Allnatt  
Melanie Dixon  
Coral Wisse

**Current trustees 2019**

Alex Shepherds  
Maraenui Taituha  
Pam Neilson  
Robbie Ahu  
Bruce McDowell  
Jill McMillan

**Current staff 2019**

Severino Simwinga  
John Brennan  
Catherine Simwinga  
Geoff & Jill McMillan  
Wendy Grant

**Landlords 2004 - Currant:**

2 private (4 houses) 2 Real Estate Agents

When people care, people change



## Tim and Bruce - Volunteers

### Fellowship Meal at Hemi Tapu Marae, April 2018

With the outdoors temperature dropping, it was decided to have a fellowship meal indoors. The Hemi Tapu Marae at 167 Massey Street, Dinsdale was the venue. After being called on, we enjoyed a hearty meal of roast lamb and roast vegetables. Nicky Moran provided music, Wayne (current resident) gave his testimony and Geoff McMillan brought a message from the scripture on the calling of Isaiah. Piki Marsh introduced three of her mokopuna.

Only 30% of the current parolees turned out, but this time there were more board members and other friends and past residents of PCM. Total turnout approx. 30 people.

The objectives of the fellowship meal was to share the love, and to provide hospitality to the residents both past and present, a party without the usual social lubricants, to assist with their re-integration into society. For volunteers and board members and friends, it was a networking opportunity to broaden horizons by meeting others in the wider PCM team.



Thanks for the hard work put in by the team, it went very well on the night! We think that such occasions are useful in deepening support networks and friendships among parolees and PCM volunteers and staff.



Bible Studies Writing Letters

How to use phones Hospital-

Orbiter bus trips Be a Buddy Handyman Taking to church Taxi service Listening

FORGIVENESS by Mathew West

[View on YouTube](#)

It's the hardest thing to give away  
And the last thing on your mind today  
It always goes to those who don't deserve  
It's the opposite of how you feel  
When they pain they caused is just too real  
Takes everything you have to say the word

"I hope one day they will  
forgive me.

My  
offending has hurt so  
many."

Forgiveness, forgiveness

Prisoner

It flies in the face of all your pride  
It moves away the mad inside  
It's always anger's own worst enemy  
Even when the jury and the judge  
Say you've got a right to hold a grudge  
It's the whisper in your ear saying set it free

Forgiveness, forgiveness  
Forgiveness, forgiveness  
Show me how to love the unlovable  
Show me how to reach the unreachable  
Help me now to do the impossible  
Forgiveness, forgiveness  
Help me now to do the impossible  
Forgiveness

It'll clear the bitterness away  
It can even set a prisoner free  
There is no end to what its power can do  
So let it go and be amazed by what you see through eyes of grace  
The prisoner that it really free is you

Forgiveness, forgiveness  
Forgiveness, forgiveness  
Show me how to love the unlovable  
Show me how to reach the unreachable  
Help me now to do the impossible  
Forgiveness

I want to finally set it free  
Show me how to see what your mercy sees  
Help me now to give what You gave to me  
Forgiveness, forgiveness  
Forgiveness, forgiveness  
Forgiveness, forgiveness



Building relationships with prisoners,  
assisting them to regain independence on release  
and supporting them as they reintegrate with family

**Purpose:** To provide an environment  
for meaningful reintegration

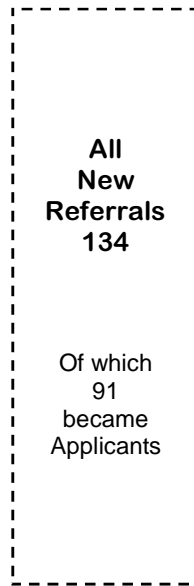
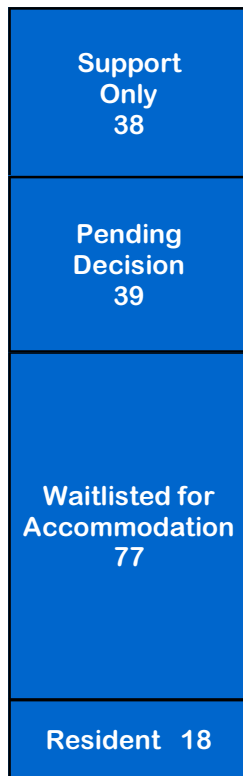
**Mission Statement:** To provide accommodation and  
rehabilitative support for men released from prison  
and those involved in the Criminal Justice System.

**Value:** When people care,:  
people change

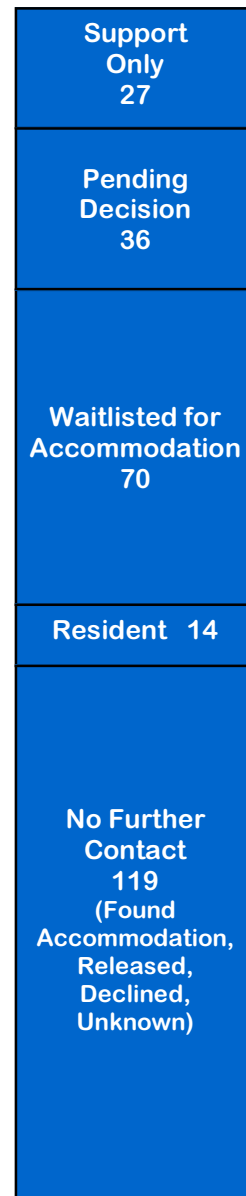
**Aim:** To reduce re offending and ensure a  
safer community

Prison Care Ministries  
Registered as a Charitable Trust  
1st September 2004.

### 31 March 2018



### 31 March 2019



### Prison Visits and AVL interviews

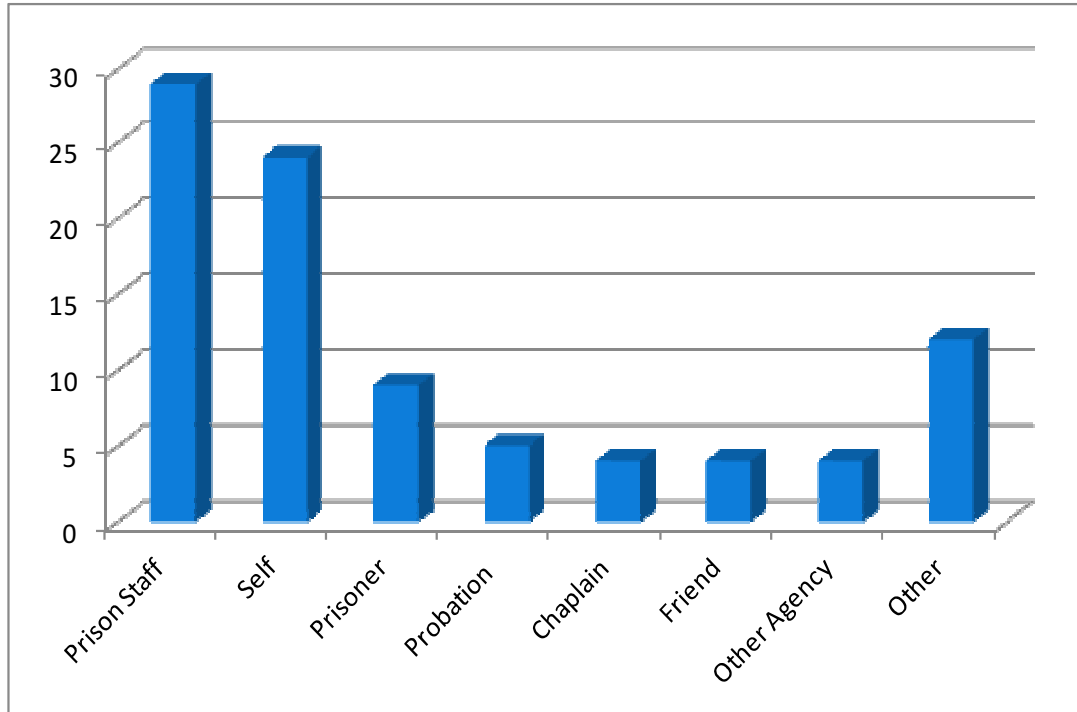
Location	Face to Face		AVL	Phone	Applicants
	Visits				
ASCF	2	4			6
Christchurch					1
Hawkes Bay			2		5
Nga Wha					1
Otago			1		1
Paremoremo					2
Rimutaka	1	3	1	2	6
Rolleston	1	1			1
Spring Hill	5	25	2		46
Tongariro	2	10	2		2
Waikeria	4	9			10
Whanganui				1	4
Other	13	14	2		3
Unknown					3
	28	66	10	3	91

Staff visit as many applicants as possible for the initial interview and will do follow-up visits when able. This helps to build the relationship and makes the transition into the community easier for both the men and staff.

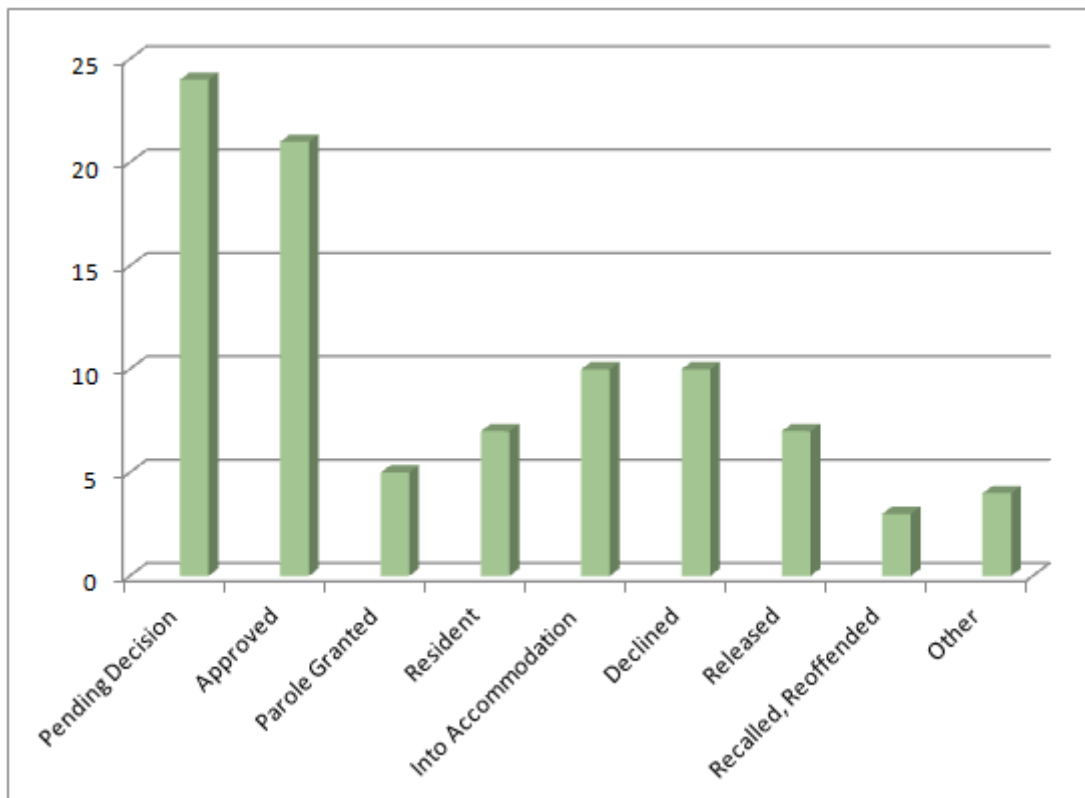
If a face to face interview is not possible due to location or time constraints then an interview by Audio Visual Link is arranged.

## 91 New applicants during the year

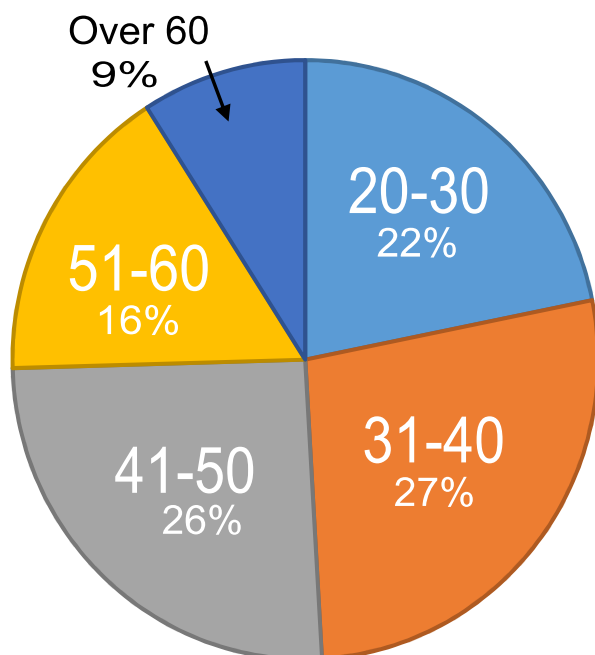
Referred by



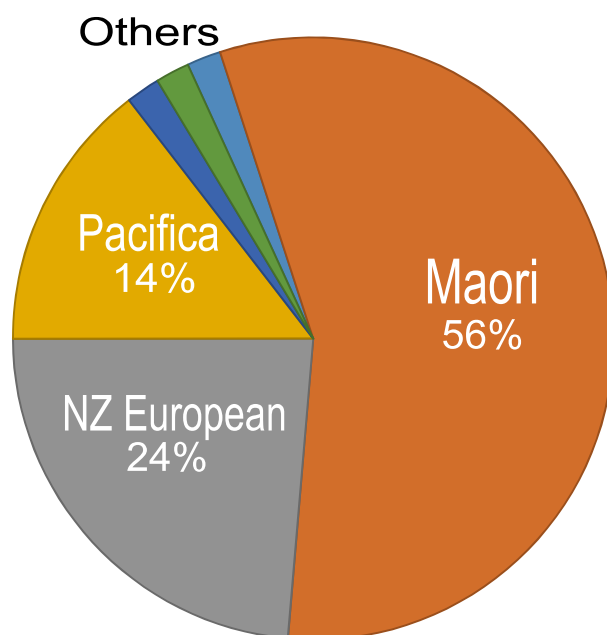
Outcomes



### Residents by Age

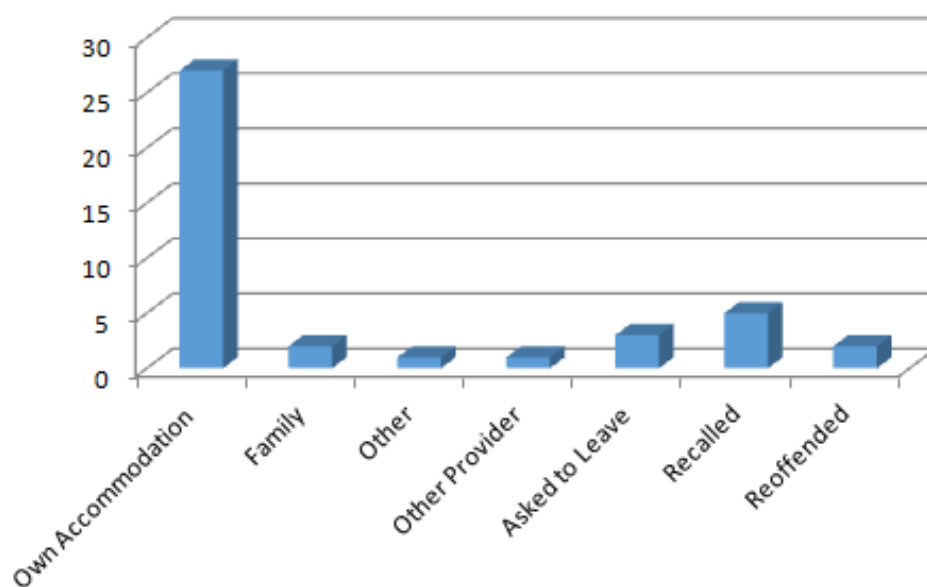


### Residents by Ethnicity



Average age, 42 years

### Residents Outcomes



New Residents 39  
 Men housed during the year 55  
 Average stay 6 months  
 Residents in transition flats/unit 11

