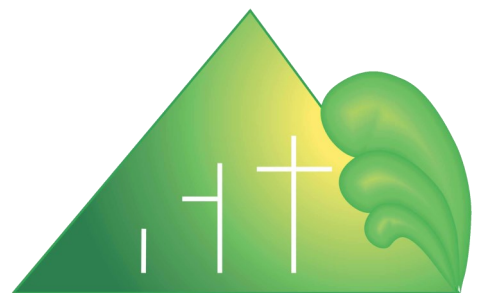


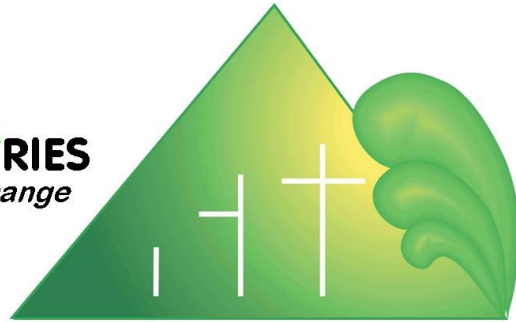
PRISON CARE MINISTRIES

ANNUAL REPORT 2023-2024

“I hope
one day
they will
forgive
me.
My
offending
has hurt
so many.”



PRISON CARE MINISTRIES
When People Care, People Change



Contents

	Page
Aims & Objectives of PCM	3
Acknowledgements	4
Trustee & Staff Reports	5
Trustees	6
Staff	7
History	13
Statistics	14
Audited accounts	17
(Can be found on the Charities Services website here)	

Registration No CC22440

Prison Care Ministries

Registered as a Charitable Trust

1st September 2004.

Building relationships with prisoners,
assisting them to regain independence on release
and supporting them as they reintegrate with
family and community

Purpose

To provide an environment
for meaningful reintegration

Mission Statement

To provide accommodation and
rehabilitative support for men released from prison
and those involved in the Criminal Justice System.

Value

When people care,
people change

Aim

To reduce reoffending and ensure
a safer community

Thank You

To the funders and supporters who ensure that Prison Care Ministries continue to provide support to those involved in the Criminal Justice System.

Trust Waikato
HCC Community Well-Being
WEL Energy Trust
Gallagher Charitable Trust
Glenice & John Gallagher Foundation
COGS
NZ Lottery Board
Norah Howell Charitable Trust
Spark
Interspeed
NZ Bible Society
Rhema Broadcasting Group
Maori Postal Aotearoa
Te Rapa Mowers & Chainsaws
Victoria 65 Foundation

Wages
Mileage
Wages
Technology Upgrade
Office Equipment
Office/Volunteers
Wages
Beds
Residential Phone
Internet Domain
Bibles
Word for Today
Calendars-Magazines
Support
Support



Other Trusts, Churches and Individuals who have generously made donations towards office rent, wages, general funds,

house provisions and other needs as they arise.

We appreciate the support from:

- Community Probation Service
- Work and Income NZ
- Prison Staff & Chaplaincy
- Auditor

Norah Howell
Charitable Trust

And a **special acknowledgement** of our private Landlords(3) as they need to negotiate with their Insurance companies to enable their houses to be used to accommodate those who have a criminal record

- one Real Estate Agency that we have a tenancy agreement with
- our residents who really encourage us to keep going.
- House provisions and other needs as they arise.

CHAIRPERSON'S REPORT—2024



I remember listening to a couple of testimonies from our 'brothers' at our last year's Christmas function and thinking, "how good is this". I whispered to my wife, "this is why I am committed to PCM".

As you know we at PCM are committed to operate from a Christian worldview. We believe that the spiritual component we offer is an essential aspect for not only the successful re-integration of our clients but their journey toward healing.

Our funding continues to be a challenge not helped by the fact that the MSD cut (without an adequate explanation) the full disability 'benefit' payment to our clients that previously helped toward meeting the costs of our services. As I write we continue to challenge this decision. To be honest it is one of the more frustrating aspects of our work. On the one hand MSD recognise the good work we do but on the other they have cut back on payments. Going forward we will look at exploring the idea of negotiating a contract with the Corrections Dept.

I would like to commend this Annual Report to you and in doing so thank my fellow Board members and all the staff for another year of outstanding service. Our staff are a group of very dedicated and skilled people who go beyond the 'call of duty'.

Finally, thank you to all our volunteers who donate their time and money. We are extremely grateful.

Alan Vink
Chairperson

29 September 2024



Trustees - left to right, Alan Vink, Robbie Ahu, Jill McMillan, Maraenui Taituha, Alex Shepherd

Alan Vink: Trust Chairperson started his working life as a Secondary School teacher, then transitioned to pastoral leadership of two Baptist churches for 23 years, followed by the last 17 years in leadership development, consultancy and teaching. Alan has been on numerous Boards of Christian organisations throughout his working life.

Robbie Ahu: Married with 5 tamariki and 5 moko. They attend Elim church. Qualified as a high performance coach in Rugby League. Robbie loves quality family times, fishing, diving and in summer motorbike riding. Previously approved volunteer to Waikeria prison.

Maraenui Taituha: Staff at Fairfield College. Maraenui is married to Alison and they have three children. They attend St. Marks Church. Maraenui was previously an approved volunteer to Waikeria Prison.

Alex Shepherd: A Software Architect, NetValue Ltd. Alex and Judi have 3 children (one married) and attend Chapel Hill Community Church. Alex has been an Elder (served five-year term) and is part of the Church Missions Team. Alex was previously an approved visitor to Waikeria Prison.

Jill McMillan: Co founder (as is Geoff) of Prison Care Ministries. Jill and Geoff retired from Prison Care Ministries 3 1/2 years ago and enjoy the challenge of bringing up their great granddaughter. now aged six. They attend Chapel Hill Community Church and retired (formally) in 2019.

SEV SIMWINGA MANAGER



RELATIONSHIP-AN ESSENTIAL INGREDIENT FOR SUCCESSFUL REINTEGRATION

Building healthy, positive relationships is crucial in supporting meaningful change and enhancing the reintegration of ex-prisoners. Relationships grounded in trust and respect serve as a catalyst for the success of other reintegration support mechanisms and provide a foundation for long-term stability. Prison Care Ministries' support services model emphasizes that all our work with our tāne is predicated upon relationships initiated by the men themselves. This approach is essential because, beyond addressing criminogenic tendencies through rehabilitation programs, the absence of genuine supportive relationships often leads to feelings of isolation, a lack of trust, and diminished self-worth. True healing can only occur through good, healthy connections.

Positive relationships provide a sense of belonging, emotional support, and guidance, helping individuals navigate the challenges of re-entering society. These connections, whether with the Prison Care Ministries support network, family, or friends, reinforce positive behaviours, offer motivation, and create a support network that reduces the risk of reoffending. They also help build social skills, develop trust, and find stability—key factors in successful reintegration.

While law enforcement, crime prevention strategies, and social welfare policies are essential for creating an environment conducive to reintegration, they cannot replace the necessity of simple, authentic human bonds—connections that offer acceptance and belonging. Institutions within the justice system and social services are, by their very design, inherently impersonal, often creating relationships that are transactional or bureaucratic. This lack of warmth and empathy can undermine trust, motivation, and self-worth, failing to foster the genuine, compassionate connections crucial for personal growth and rehabilitation. The impersonal nature of these institutions often creates flaws that undermine the environment required for meaningful change.

Geoff and Jill McMillan, the founders of Prison Care Ministries, now retired, have, since the ministry's inception 20 years ago, emphasized that meaningful change requires an investment in cultivating simple yet authentic human connections. These connections are essential for providing emotional, psychosocial, and spiritual support, as well as a sense of belonging necessary for healing and well-being.

TWO DECADES OF IMPACT

Two decades since its founding, Prison Care Ministries remains resilient and focused on its core mission: supporting the reintegration of men back into the community. Our approach centres on providing supported accommodation combined with a person-centric, wrap-around support service—a method we describe as "walking alongside the men."

Over the past 20 years, Prison Care Ministries has supported 800 men in their reintegration back into the community. The impact of our work extends far beyond these individual, touching the lives of countless others throughout New Zealand.

Because Prison Care Ministries has and continues to, directly and indirectly impact so many individuals, families, and community members, our commitment remains strong, and we continue to walk alongside each person their path to reintegration, knowing that every step forward creates a ripple of positive change for all.

WE HAVE MOVED

In August 2024,
Prison Care Ministries moved to
2 Mahoe Street, Melville,
Hamilton,
a Community Centre, formerly,
St Stephens Presbyterian



HOUSING

Our housing portfolio, consisting of seven properties, has remained the same. Five of these houses are primarily designated for men released from prison on parole, providing them with a stable and supportive environment as they reintegrate into the community. The remaining two houses are reserved for men on remand, offering a safe space while they await the next steps in their legal process.

STAFF

In March 2023, John Brennan resigned from his position as Office Manager of Prison Care Ministries. However, John has graciously continued to contribute to the ministry—initially by supporting the new Office Administrator and now as a valued volunteer.

In October 2023, we welcomed a new team member, Adrienne Corfe, as our Office Administrator. Adrienne brings a wealth of experience to the role, having held similar positions in several organisations.

Additionally, our seasoned counsellor, Michael Hughes, has retired. Although no longer in a full-time capacity, Michael remains available to provide cover during staff leave or in times of urgent need.

EXCERPTS FROM OUR MEN

One man serving a life sentence says:

“Life in general is not great for me, things are compounding on me. I have lost all faith in the system and I have given up trying.... I don’t foresee getting released anytime in the near future, so I would like to you to please remove me from your wait-list. I am truly grateful for all that you and the Prison Care Ministries team have done for me and I will always hold you all dearly in my heart”.

Another man whose release is imminent says:

“I really do give you my word. I can learn heaps from you- please teach me. I don’t mind being your student. I want to learn proper ways of the Lord Jesus Christ because I am self-taught. But from our last meeting I noticed I can’t wait to go Prison Care Ministries.

Since speaking with you, I’ve given myself achievable goals and I have always wanted to follow through with my Engineering qualification, so I have made up my mind that I am going to follow through and get my welding tickets.

Recently, one of our ex-residents, who successfully reintegrated into the community five years ago, visited us and offered to help in any way he could. I gave him some carpentry work, which he took on without hesitation and completed excellently. When I thanked him for his contribution, he responded, *'I am happy to be able to give back to yous. Yous have done so much for me.'* Remarkably, he even took a day off work just to come and assist us.

YOU HAVE EMPOWERED PRISON CARE MINISTRIES FOR 20 YEARS

I would like to extend heartfelt thanks to our funding providers, sponsors, and the many generous donors who enable us to offer reintegrative support to the men in our care. Your invaluable contributions empower us to continue serving the community by helping these men not only stay out of prison but also become productive members of our communities. Thank you for caring enough to support us – indeed when people care people change.

Recently, Sev and Tony attended a podcast interview with *Helping Heroes*, a not-for-profit podcast that shines a light on amazing local organizations and the selfless staff who power them. The original plan was to produce a single episode focused on Prison Care Ministries. However, after the recording, the *Helping Heroes* team expressed how impressed they were with the conversation and decided they didn't want to edit it down to fit one episode. Instead, they requested that Sev and Tony return to record an additional 10-15 minutes of material, allowing for a double episode dedicated to PCM.



TONY NGUGI MUNGAI REINTEGRATION OFFICER



One Year in Review—Progress and Hope

In the past year, PCM has continued to make significant strides in the reintegration of men coming out of New Zealand prisons. Our team has dedicated many hours and has worked tirelessly to support individuals transitioning from incarceration to community life, addressing their critical needs such as housing, mental health services and ultimately helping them support themselves financially. All our efforts are geared towards empowering these men to rebuild their lives, reduce reoffending rates, and contribute positively to their communities.

One of my key focus this past year has been relationship building with several of the men who have sought our services. By focusing on relationship building, we continue to create a more supportive and effective environment for ex-prisoners, ultimately leading to better outcomes for them and the community as a whole. One such outcome is trust and support where higher trust levels allow for open communication and more tailored and effective support. Another outcome is skills development where through consistent engagement our residents can participate in various skill-building activities and programs. A third is mental health and well-being whereby these positive relationships can assure the inmates that there are people out there who care about their progress, consequently reducing feelings of isolation and hopelessness.

Another focus for the year has been to gain a better understanding of how WINZ works since PCM acts as an agent with the Ministry of Social Development (MSD) on behalf of the residents in our supported accommodation. Many ex-prisoners have noted that the process of applying for the benefit can be complex and challenging, especially with the need to be proficient in both online and paper-based application processes. Our role is to ensure these men receive the best possible services from WINZ around entitlements, grants and health and disability benefits. When necessary, we also advocate for them when their unique needs are not being addressed. To upskill and stay updated with the constantly evolving policies and procedures of MSD, I enrolled and attended several sessions of Community Law Waikato's *Legal Education 2024 series*. These sessions have been invaluable in providing the necessary information on regulations and enhancing my competence in engaging with WINZ.

We remain dedicated to creating safe and stable environments where all our residents can feel secure, offering them affordable housing solutions as many face significant financial challenges upon leaving prison. Our property management efforts are key to our success, ensuring that men reintegrating into society find accommodation that meets essential needs for a successful transition. Additionally, our housing provides support for spiritual wellness through organized weekly Bible studies. While support is vital, we also understand the importance of privacy and independence, which helps the men regain their autonomy and confidence in managing their own lives. Our property management approach keeps this balance in mind.

In a year marked by tighter fiscal measures, I am grateful that we successfully applied for and received two grants, enabling us to launch new projects and continue advancing our reintegration efforts. One grant allowed us to replace our aging computer equipment, enhancing our efficiency in service delivery. The other grant has enabled us to start a Skills Development project, providing former inmates with opportunities to develop practical gardening skills, gain landscape experience, and learn how to use equipment effectively. Our goal is to prepare them for meaningful employment upon their release from our supported accommodation program.

Reflecting on this year's experiences, I am encouraged by our collaborative efforts. Together, we bring hope to those who seek our help, fostering safer communities and reducing crime. When people care, people change!

**CATHERINE SIMWINGA
COUNSELLOR**



Over the past year, our team has been on a journey to respond to the e growing need for more counselling hours. Recognizing this, we welcomed a new counsellor into our fold—a man with a wealth of experience, particularly in working with those who have faced significant challenges. His background in prison settings has equipped him with unique insights, making him especially effective in supporting the men we work with. His presence has brought new dimensions to our team, allowing us to meet the needs of our male clients in profound ways.

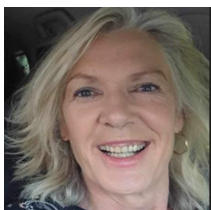
Our vision for expansion continues to grow. We are exploring ways to extend placement hours, not only to students from Wintec but also to those from BTI in Tauranga. This reflects our commitment to broadening our reach and nurturing the next generation of counsellors.

As we move into the third year of providing counselling support to men on remand, we continue to witness the transformative power of this work. The uncertainty these men face as they await the outcomes of their court cases can be overwhelming. In response, we have focused on creating safe plans, understanding that the weight of uncertainty can sometimes lead to despair. For some, the thought of returning to prison feels unbearable, and we have observed an increased risk of suicide, particularly among first-time offenders.

In recognizing these challenges, our team has prioritized training in suicide prevention. We are committed to early detection of signs and implementing strategies that prioritize safety while maintaining confidentiality. Our collective efforts are geared towards ensuring that each man feels seen, heard, and supported during this difficult time.

None of this would be possible without your unwavering support. Your contributions have made a tangible difference in the lives of these men. Thank you for being part of this important work.

**ADRIENNE CORFE
OFFICE ADMINISTRATOR**



In my first year as Officer Administrator at Prison Care Ministries, I've had the chance to participate in an exciting office move back to a space where I had previously worked in another role. It's been wonderful to see how smoothly everything came together, creating a warm and welcoming environment for our clients transitioning from prison to the community. Assisting our clients has been very rewarding, as has gaining an understanding of the unique challenges they face as they reintegrate with whanau and community, and once again highlights the importance of our work.

As we look ahead, I'm enthusiastic about supporting our mission and making a difference in the lives of those we serve.

JOHN BRENNAN



In April 2023 I took up the position of administrator for my church, but continued to work part time for PCM. The first seven months was rather stressful due to the organisation being low on staff. Others took over some of my duties, and I had to carefully prioritise the remaining tasks. Last years audit was completed just in time to submit the annual return to Charities Services.

It was good to see Adrienne come on board in October and for the remainder of the year I have been helping her to get acquainted with the role.

A highlight in the past year was the opportunity to visit a man who I have been writing to for over five years. I have been very impressed with the way he has used his time. He commenced a study program which covered a wide range of subjects, but eventually focused in on the area of Environmental science. As well as that he began an art course and discovered that he really excelled at it. The latest word being that his Art school were planning to exhibit some of his paintings with three figure sums attached to them. On top of all this he has worked every day in the nursery becoming the supervisor of an operation churning out hundreds of thousands of seedlings a year.

As I was visiting in a private capacity, visiting hours are very restrictive – just a certain hour on a certain day of the week – but earlier in the year, that hour happened to coincide with other plans to travel to greater Auckland. It was a precious time to not only fill in some of the gaps in his story, but also hear of some the ways that his offending still negatively affects his view of himself so many years later. I appreciated his openness, and in the remaining minutes had the privilege to share a few words of encouragement and point out that the One who made us, has made a way for us all to be forgiven.

Kum Lan Brennan



On arrival the men receive a bag of laundry containing bedding and towels. This gives them time to get their own bedding.

On departure the laundry bag is returned. Sometimes the contents come back clean and tidy. Other times the items certainly need a good wash and in other cases, some of the items must be discarded.

Therefore, there is a constant need to replace our inventory of laundry. This has meant that I have become a frequent customer at some of the local Op Shops often picking good bedding at very reasonable prices.

Our bedding consists of ;

Mattress Protectors, Sheets, Duvet Covers /Inners, Towels, Pillows and Blankets.

Hey Miss... "Where can I go when I get out of here."

Waikeria prisoner

June 2001
First meeting post release accommodation

David Stone
Anton Roest
Geoff McMillan

July 2001
inaugural meeting

17 people attended this meeting including a Probation officer and released prisoners.

Nov 2001
Hamilton Support Accommodation Network (HSAN) Committee

Geoff & Jill Smith
Eileen Boshier
Mel Impey
Anton Roest
Geoff & Jill McMillan

HSAN-PCM

July 26th 2004 First House opened under HSAN. Thanks John.

September 1st 2004 Prison Care Ministries became a Charitable Trust

April 1st 2005 became a trading name under Prison Care Ministries

January 2008 HSAN committee disbanded

September 2004
PCM Trustees

Mike Marama Te Ahuru (Chairperson)
Alex Shepherd
Len Caley

Maraenui Taituha
Geoff McMillan
Jill McMillan

Chairpersons 2004-2024

Mike Marama Te Ahuru
Alex Shepherd
Len Caley
Alex Shepherd
Alan Vink

2004 First house opened
2005 Second house opened
2007 Third house
2010 Fourth house
2014 Fifth house
2015 Seventh house
2016 Eighth house opened
2019 Ninth house opened
Currently seven houses

2018 Severino Simwinga appointed as manager.

2019 Geoff & Jill McMillan formally retire.

Current Trustees 2024

Alex Shepherd
Maraenui Taituha
Robbie Ahu
Jill McMillan
Alan Vink

Current Staff 2023-2024

Severino Simwinga
Tony Mungai
Catherine Simwinga
Michael Hewatt
John Brennan
Adrienne Corfe
Kum Lan Brennan

When people care, people change

31 March 2023

Support Only 22
Pending Decision 14
Waitlisted for Accommodation 24
Resident 13

All
New
Referrals
139

Of which
77
became
Applicants

31 March 2024

Support Only 18
Pending Decision 29
Waitlisted for Accommodation 23
Resident 16
No Further Contact 96 (Found Accommodation, Released, Declined, Unknown)

Prison Visits and AVL interviews

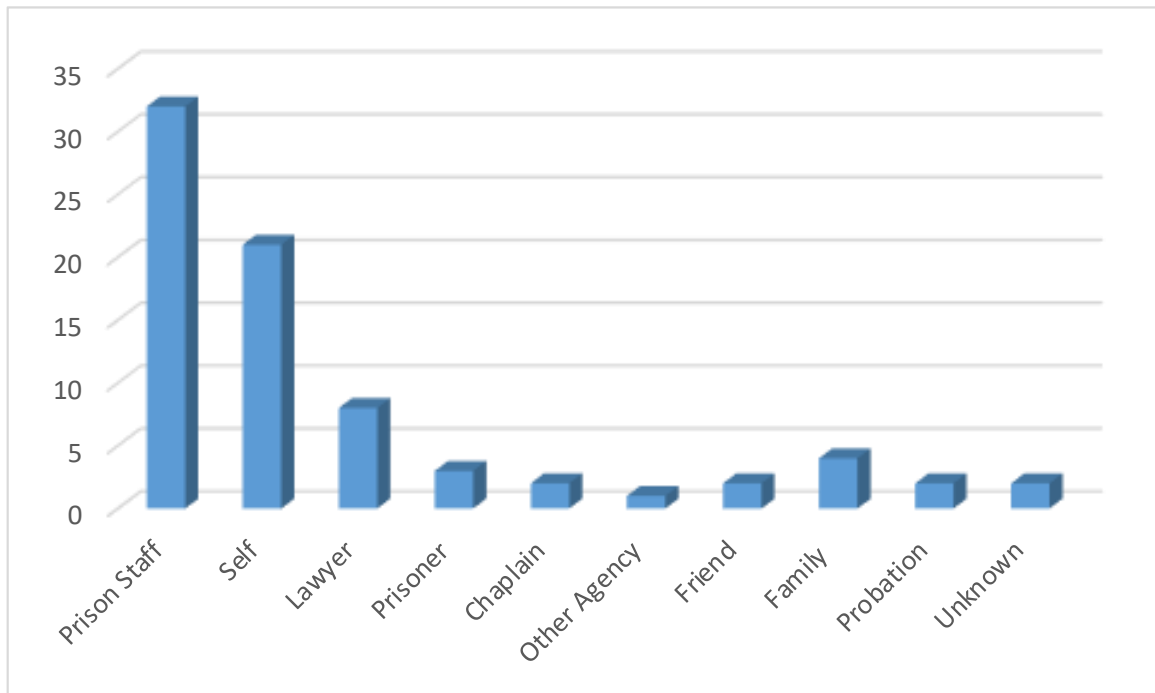
Location	Interviews		AVL	Teleph	Applicants
	Visits				
ASCF	5	11	2		4
Hawkes Bay	1	3			1
Kaitoki					6
Mt Eden					1
Paremoremo			1	2	5
Rimutaka	1	3			23
Rolleston	8	24		1	2
Spring Hill	7	21			15
Tai Aroha	13	26	5	1	1
Tongariro	1	4			3
Waikeria					
Whanganui					
Other					
Unknown					
	36		8	4	61

Staff visit as many applicants as possible for the initial interview and will do follow-up visits when able. This helps to build the relationship and makes the transition into the community easier for both the men and staff.

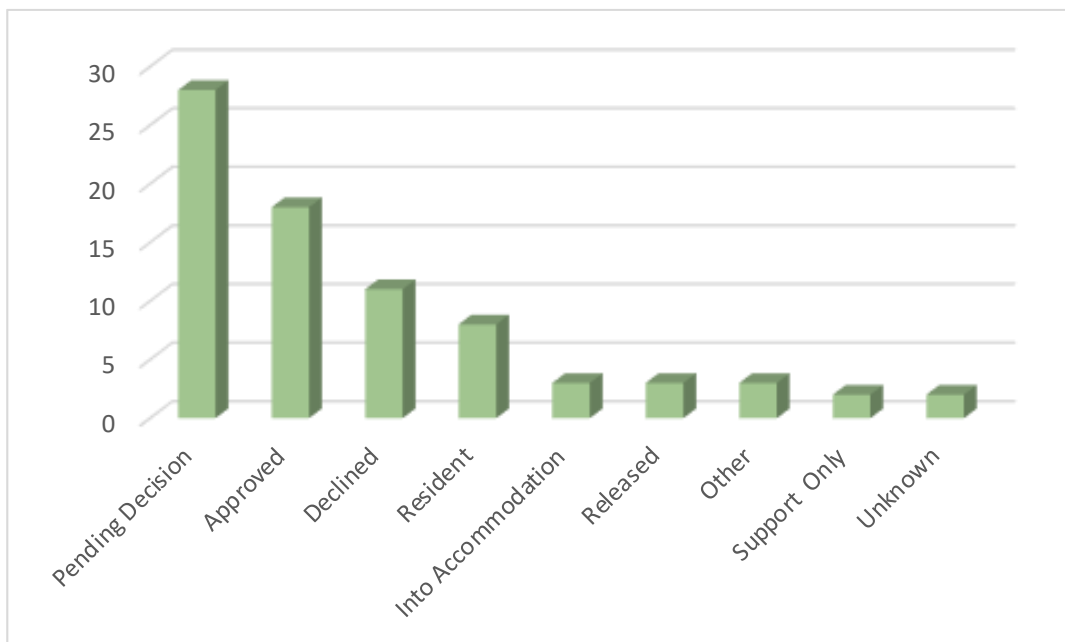
If a face to face interview is not possible due to location or time constraints then an interview by Audio Visual Link or telephone is arranged.

77 New applicants during the year

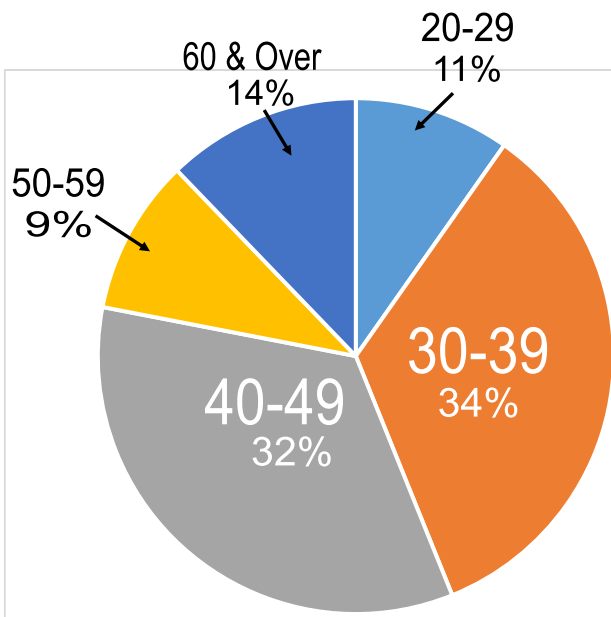
Referred by



Applicant Outcomes

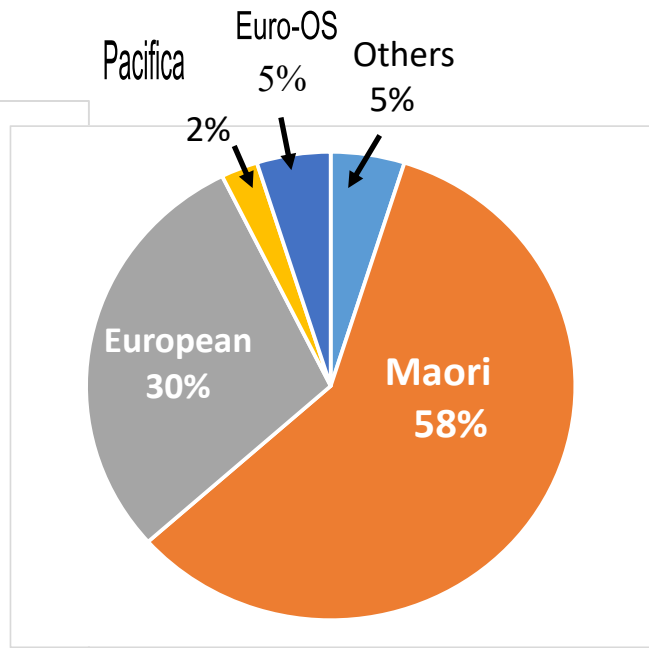


Residents by Age



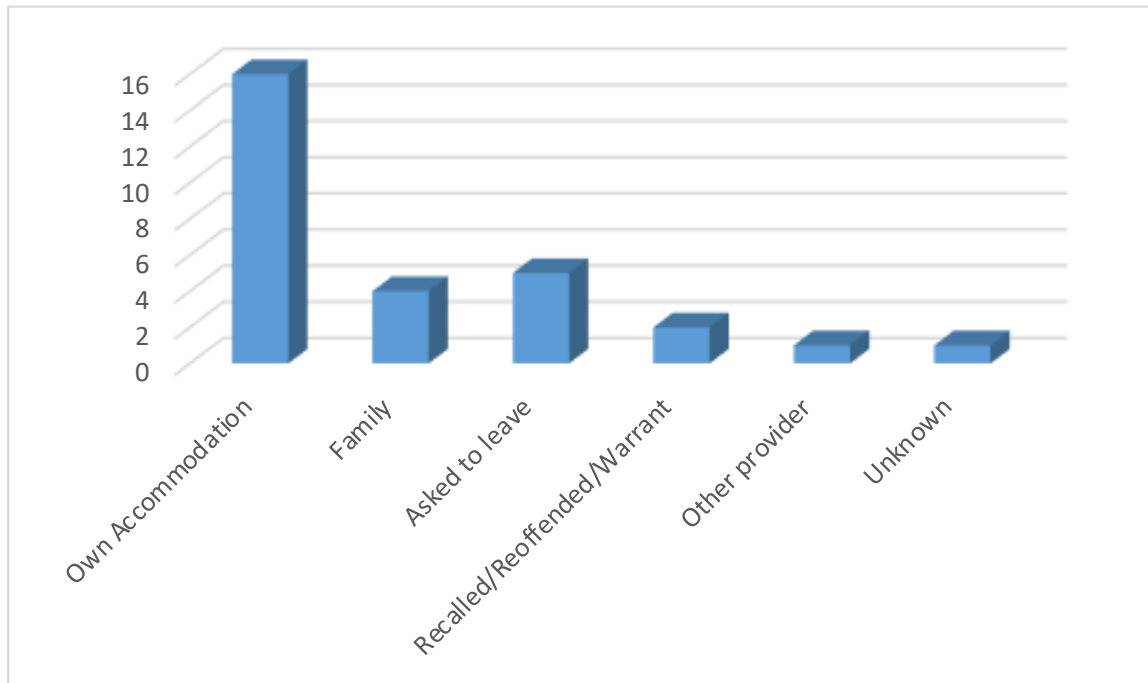
Average age: 42 years

Residents by Ethnicity



Sentenced 59%
On Remand 41%

Residents Outcomes



New Residents: 31
Men housed during the year: 41
Median length of stay: 3.3 months